

Decubitus Treatment Model

LM-078

Instruction Manual

Thank you for purchasing the LM-078 Decubitus Treatment Model.
Please read this Instruction Manual to ensure correct use of the product.
Store it in a safe place for easy access.

KOKEN CO., LTD.

1-4-14 Koraku, Bunkyo-ku, Tokyo 112-0004 JAPAN
URL:<http://www.kokenmpc.co.jp>
E-mail:customer@kokenmpc.co.jp



Handling and Safety Precautions

Follow these precautions to ensure safe and long-lasting use of the model.

The following precautions should be observed particularly strictly:

- This model is made to simulate the texture of the human body. Excessive force may damage the model.
- Do not place objects on the model. Deformation may result.
- Follow the instructions in 4. Caring for the Model to remove dirt and smudges from the model.
- Never use oil-based inks or paints on the model as they may cause permanent staining.
- Store the model in a place where it will not be exposed to direct sunlight or UV rays. Extended exposure to direct sunlight or UV rays may cause discoloration on the model.
- This product is intended for use in standard operating environments. Do not use it in heavy industrial settings.
- This model uses urethane foam for some of its parts, and may be susceptible to damage from pests that are attracted to urethane foam (such as insects in the ant family).

When storing this model, ensure that thorough measures are taken to prevent pest damage before storing. The company will not be involved with or held liable for pest damage that occurs during storage.

1. The contents of this instruction manual are subject to change without notice.
2. This instruction manual may not be reproduced in part or in its entirety without permission.
3. Please contact the manufacturer in the event that any errors or omissions are found in the contents of this instruction manual.
4. This product should be used only as described in this instruction manual. In particular, the product should not be used in any way that contravenes the precautions noted in the instruction manual.

Table of Contents

1. Outline and Features
2. Part Composition and Names of the Components
3. Handling the Model
 - 3-1. How to wear
 - 3-2. Picture-card style
4. Caring for the Model
5. Specifications

1. Outline and Features

Outline

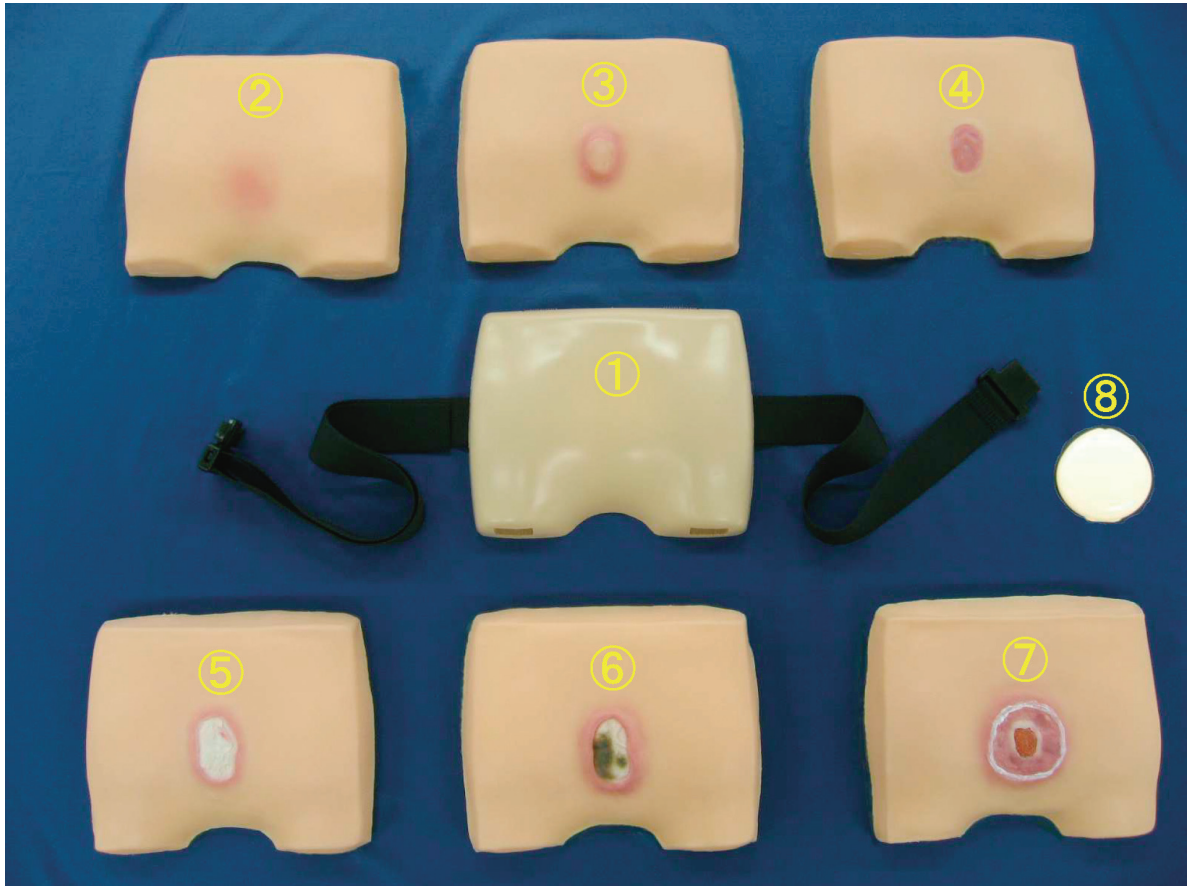
This model is a reproduction of decubitus (a bedsore) on the sacral region shown in separate stages (Stage I to IV). It can be fitted to a human or a training model.

Features

- Six layers of skin are used to represent Stage I to IV to enable understanding of the classification of each stage.
- The skin is made of silicone rubber for an appearance and texture that is similar to that of the human body.
- All six skins can be layered on together and peeled off one by one to show the progression of decubitus at a glance. (Picture-card style)
- Ointment can be applied and surgical treatment can be performed.
*Do not apply ointment to the fitting holder. The surface paint may peel off.

2. Part Composition and Names of the Components

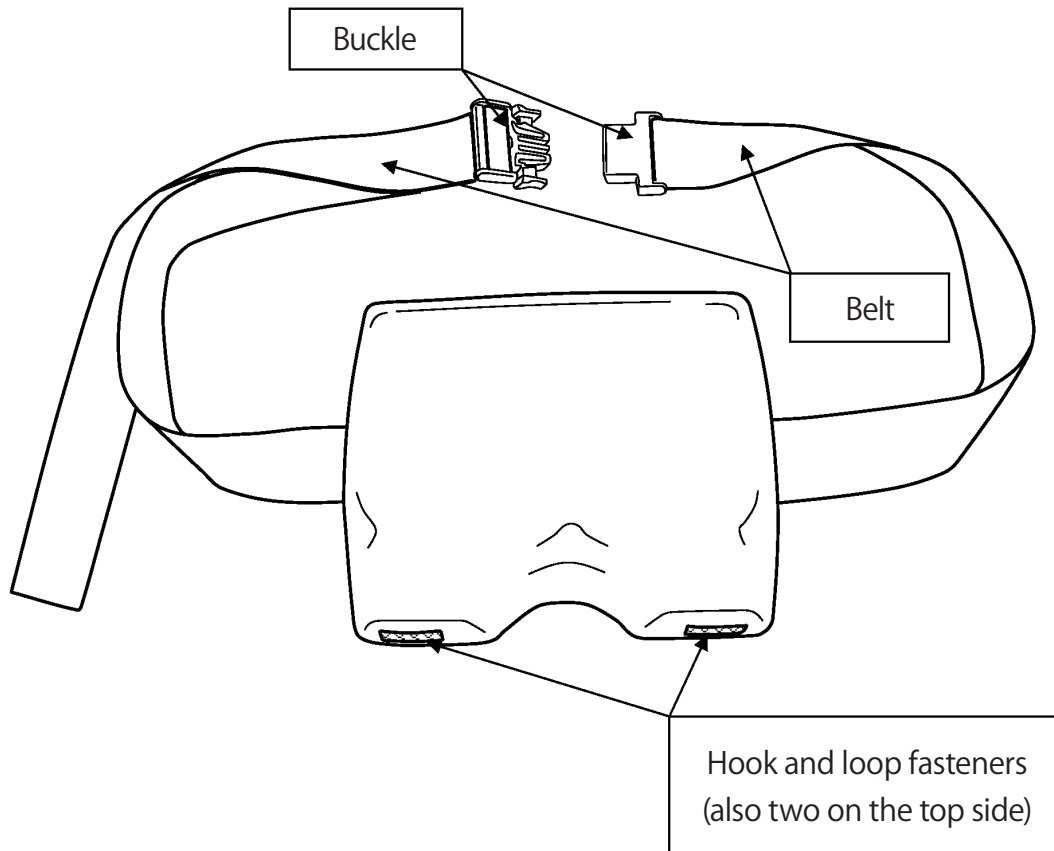
Part Composition



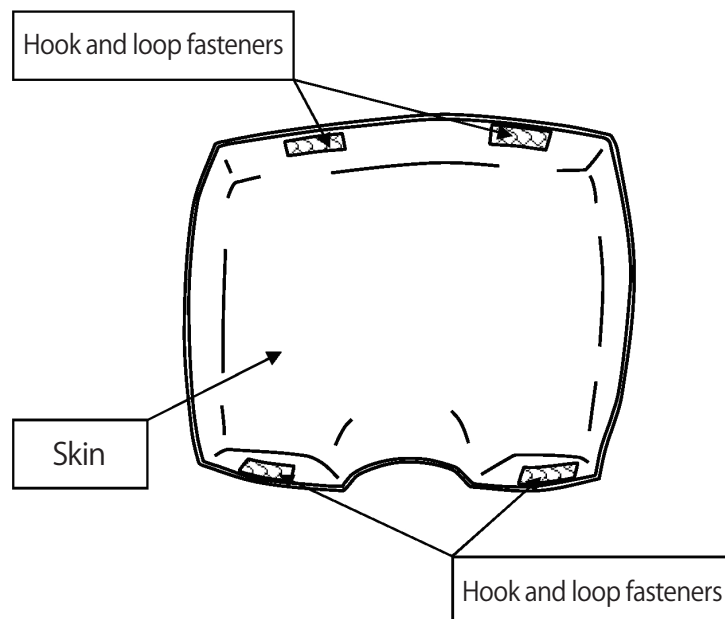
	Name of Components
①	Fitting holder
②	Stage I Skin (flare)
③	Stage II Skin (blister)
④	Stage II Skin (epidermolysis)
⑤	Stage III Skin (decubitus with white necrotic tissue)
⑥	Stage III Skin (decubitus with black necrotic tissue)
⑦	Stage IV Skin (decubitus with exposed bone)
⑧	Baby powder

Names of the Components

Fitting holder



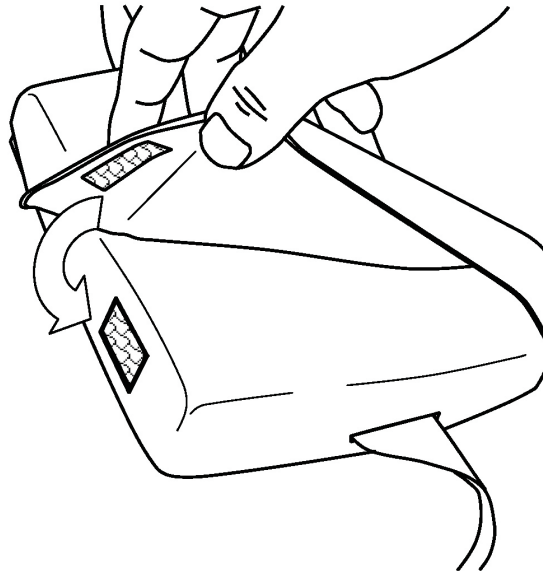
Skin (underside)



3. Handling the Model

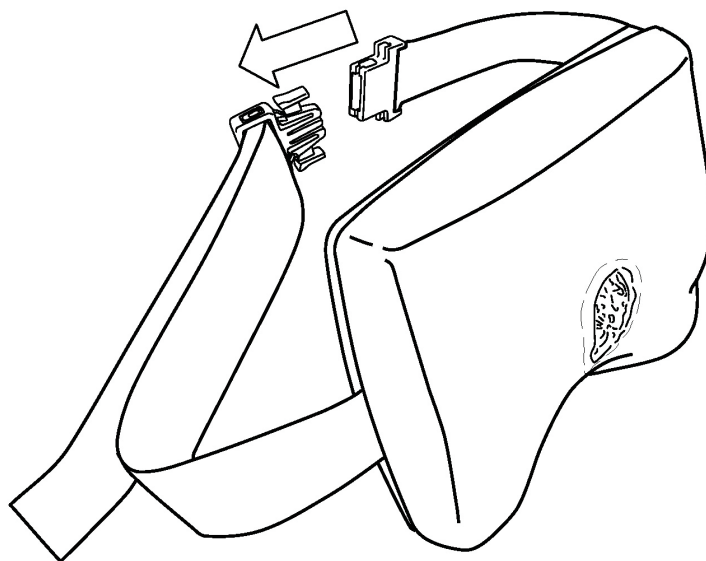
3-1. How to wear

(1) Select one of the six skins to attach to the fitting holder.



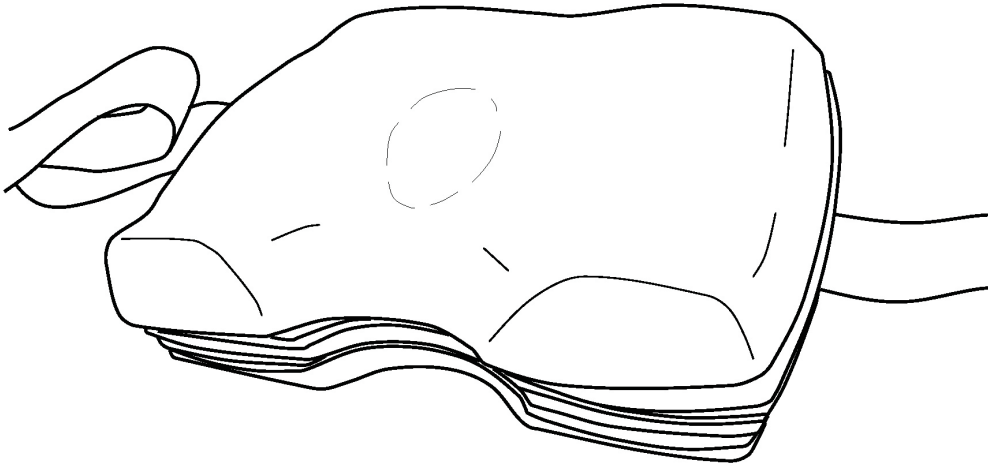
Place the hook and loop fasteners together to attach in place.

(2) Wrap the belt around the hips, close the buckle, and adjust the belt length.

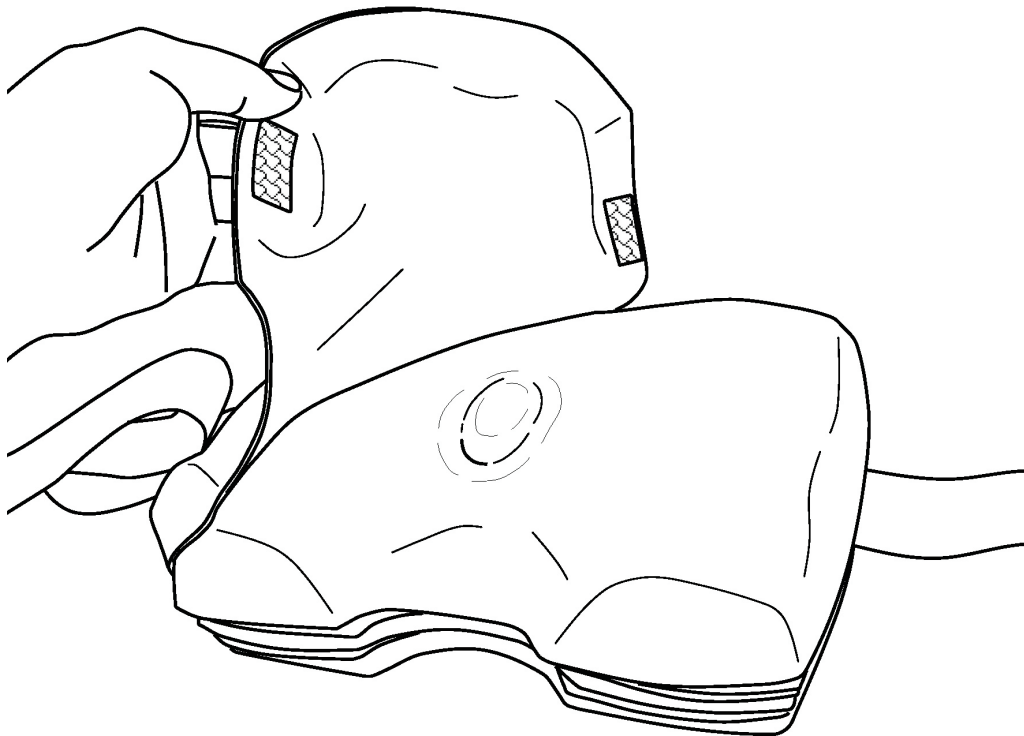


3-2. Picture-card style

(1) Layer each skin onto the fitting holder in order from Stage IV to Stage I.



(2) Peel away each layer of skin at a time to observe the progression of decubitus.



4. Caring for the Model

Fitting holder

- Wipe dirt and smudges off the fitting holder with a damp cloth or gauze. Do not use thinners, benzine, or similar solvents. Doing so may cause the paint on the surface of the fitting holder to peel.

Skin

- Wash dirt and smudges off the skin with water or a neutral solvent diluted with water.
- When washing the Stage II skin (blister), be careful to avoid scraping it with your nails as the skin may tear.
- After washing, let the model dry, then pat baby powder all over the model. For storage, layer all six skins onto the fitting holder (see 3-2. Picture-card style on p. 7).

5. Specifications

Names of the Components	Length	Width	Height	Weight
Fitting holder	Approx. 18 cm	Approx. 22 cm	Approx. 5 cm	Approx. 300 g