

<Female organ model type I LM030 (with a storage case)>

Instructions for use

Thank you very much for purchasing the female organ model type I.
Please read the instructions carefully for proper use.
Keep the instructions with care at hand.

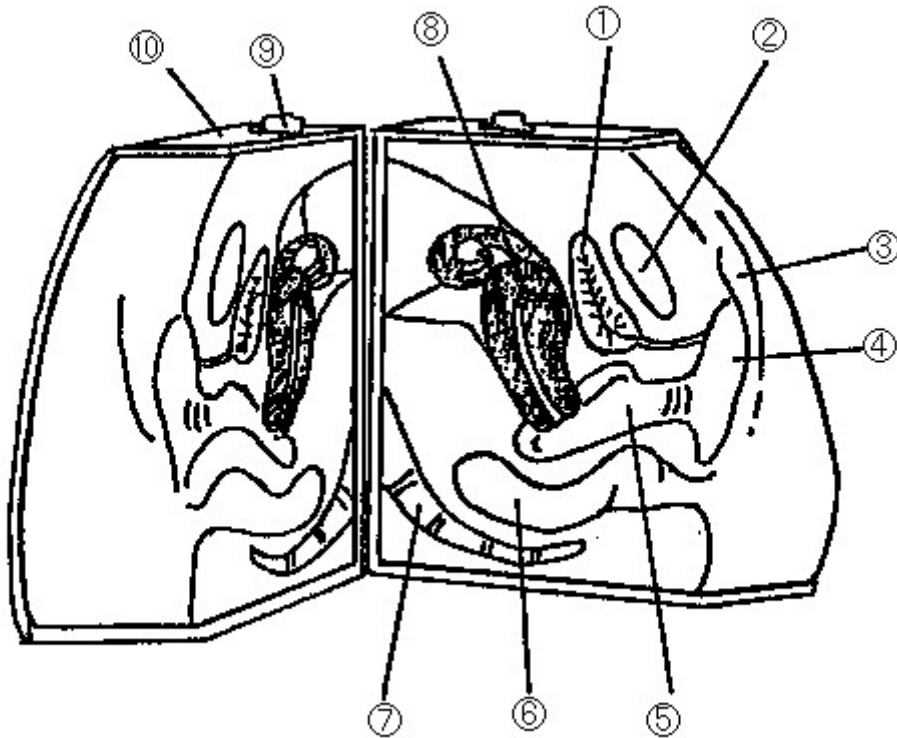
Contents

1. Name of each part
2. Cautions for use
3. Proper method of use
4. Caring and storage after use
5. Composition and specification of the model



C-1-914-2-01-03

1. Name of each part



- ① Bladder, ② Pubis, ③ Labium majus, ④ Labium minus, ⑤ Vagina,
⑥ Rectum, ⑦ Coccyx, ⑧ Uterus, ⑨ Stopper, ⑩ Outer frame case

2. Cautions for use

1. Since this model is made of special silicone rubber resembling a living body, please handle it gently as you would do a living body.
2. If the skin become oily, please apply baby powder, etc, .
3. Remove the dirt on the skin using neutral detergent diluted with water or a gauze soaked with alcohol. Never use solvents such as a thinner or benzene.
4. Do not expose the main body of the model directly to the sun for long hours.
5. Person with long nails should cut them short before a practice.

3. Proper method of use

1. Always apply a lubricant such as a jelly when a finger or a contraceptive device is inserted.

4. Caring after use

1. Open the model and wipe off the lubricant oil inside well. The model can be separated from the outer case.
2. If the model is washed with water, dry it thoroughly before storage.
3. Store in the attached case after use.

5. Components

1. Components

Product's name	Quantity
Main body	1 pc
Outer case	1 pc
Storage case	1 pc

2. Specification

Product's name	Length (cm)	Width (cm)	Height (cm)	Weight (kg)
Main body	21.5	13.5	23	1.38
Storage case	16	23	25	0.28

KOKEN CO.,LTD <http://www.kokenmpc.co.jp>

1-4-14 Koraku, Bunkyo-ku, Tokyo 112-0004 JAPAN

Email: customer@kokenmpc.co.jp